

Data and Knowledge Management SGG

Anthony Rowe, Janssen R&D
Data and Knowledge Management SGG



IMI-1 Knowledge Management Projects

Research Informatics



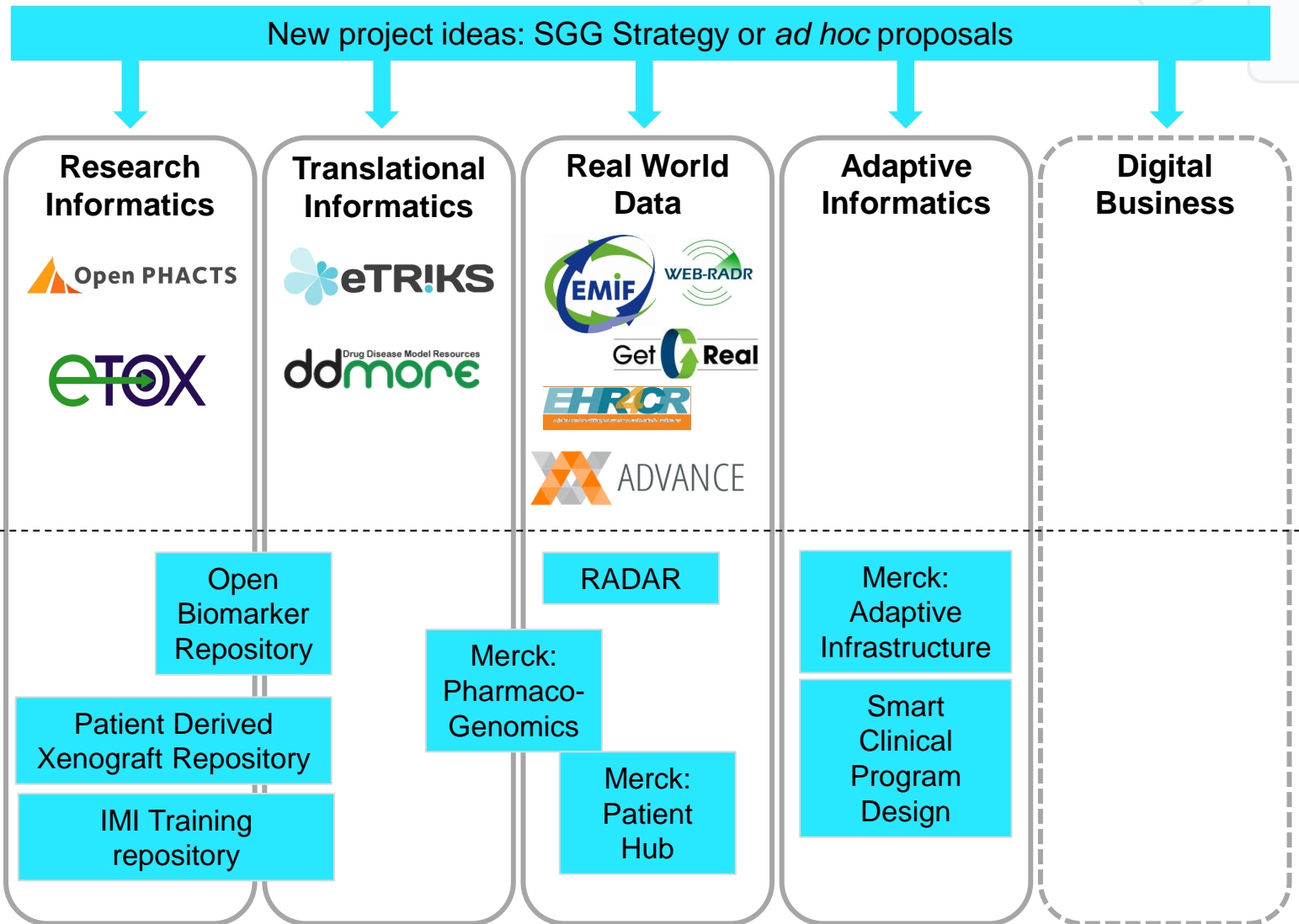
Translational Informatics



Medical Informatics (RWD)



IMI 2 Data and Knowledge Management SGG Enabling Platforms – Early Thoughts



So some opportunities...

- * What does Data & Knowledge Management look like in 2020?
- * What trends are going influence out platforms :
 - * Externalisation
 - * Patient centricity
 - * Adaptive pathways
 - * New data types
 - * Systems/Network biology
 - * Stratified medicine
- * How do we take advantage of these to develop the platforms of the future

EXAMPLE PROJECT - RADAR

Challenges in Managing Chronic Disease Today

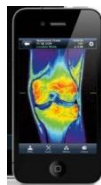


* Physician visits are **time-limited evaluations** based on **subjective observations** of both the patient and the physician or psychiatrist

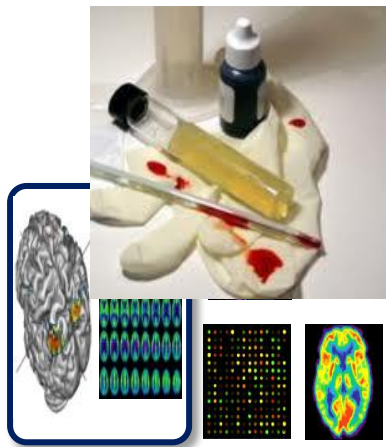
* **Changes in disease state** for each of these diseases can occur on timescales **much shorter than the interval between physician visits**



* Through technological advances over the last decade it is now possible to **objectively, remotely, and continuously** measure aspects of patient **physiology, behavior and symptoms**



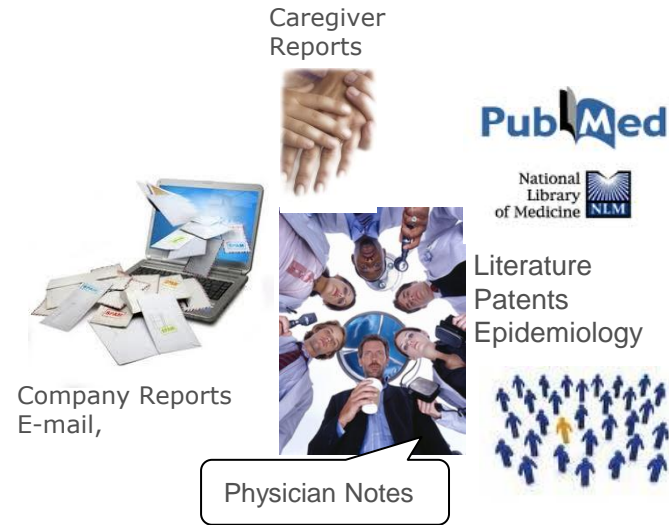
Escalating Data Challenge: From Discrete Information Events To.....



Discrete Centralized



Discrete Decentralized



Non-Discrete Decentralized



- 'Point-of-Facility'
- Discrete, Structured, Information Events
- Controlled Populations (clinical trials, longitudinal disease studies)

- 'Point-of-Need'
- Real-Time Multiplexed Read-Outs (Diagnostic, Prognostic, Drug Monitoring)
- Distributed Populations in Physician Settings

- Semi-Continuous
- Semi-Structured data
- Multiple sources

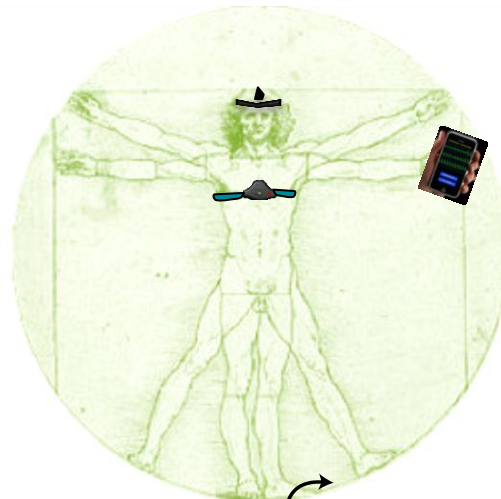
.....Continuous Streams of Information 'Quantification of Man'



Mobile Computing Devices



Social Media



Remote Monitoring Sensors



Brain Fitness Centers

New Data Types, New Tools for: Information Extraction Knowledge Representation

Integration Mining

On-Patient

- Actigraphy
- Speech
- Eye movement
- EKG, HR, HRV
- EEG
- Sleep
- Galvanic skin response
- O2 Sat
- Skin temperature

Off-Patient

- Fixed cameras
- Bed embedded sensors
- Computer usage
- Phone usage
- Refrigerator usage
- Motion sensors

Example: Technology Correlates to Clinical Parameters

EWSQ 10 Patient Version	Potential Technology Correlates
Has your sleep worsened since the last evaluation?	Sleep EEG (iVigil) Actigraphy (Hidalgo)
Has your appetite decreased since the last evaluation?	
Has your concentration, e.g., ability to read or watch TV, worsened since the last evaluation?	Eye tracking Computer tracking (Monarca)
Have you experienced fear, suspiciousness, or other uneasy feelings while being around people since the last evaluation?	Skin Conductance (Hidalgo) Heart rate / variability (Hidalgo) Cell phone location (Monarca)
Have you experienced increased restlessness, agitation, or irritability since the last evaluation?	Actigraphy (Hidalgo) Galvanic Skin Response (Hidalgo) Speech Analysis (Hidalgo/IBM)
Have you noticed that something unusual or strange is happening around you since the last evaluation?	
Have you experienced loss of energy or interest since the last evaluation?	Actigraphy (Hidalgo) Computer Tracking (Monarca)
Has your capability to cope with everyday problems worsened since the last evaluation?	Speech Analytics (Hidalgo/IBM)
Have you experienced hearing other people's voices even when nobody was around since the last evaluation?	
Have you noticed any other of your individual early warnings signs since the last evaluation?	

Remote Assessment of Diseases And Relapse (RADAR) - AIMS

- * Develop and validate the science of using **biosignatures to characterise disease** and predict changes in disease state **through observational studies**
- * Understand the **regulatory and patient pathways** for using remote assessment in healthcare
- * Encourage innovation and development of **novel biosensors** and the associated **knowledge management** technology
- * Develop standards for Information Exchange that enable **seamless integration** of sensor, data capture, data management, & analysis technologies

Remote Assessment of Diseases And Relapse (RADAR) - AIMS

- * Develop and validate the science of using **biosignatures to characterise disease** and predict changes in disease state **through observational studies**
- * Understand the **regulatory and patient pathways** for using remote assessment in healthcare
- * Encourage innovation and development of **novel biosensors** and the associated **knowledge management** technology
- * Develop standards for Information Exchange that enable **seamless integration** of sensor, data capture, data management, & analysis technologies

RADAR– Vision

Research and Validation
Studies

Neuroscience

CVM

Inflammation

Multi
Indication

Platform Activities

Analytics Development

Public Datasets

Open Innovation Network

Data Management

Data Capture Standards

Sensor Communication Standards

Biosignatures of Depression Relapse

E.g. Biosignatures for predicting MI/Stroke

E.g. Biosignature of exacerbation in
COPD/Asthma

High Risk populations (e.g. aging)

Biosensor Innovation

WP Stakeholder Engagement & Policy
Advancement

WP Data Protection, Confidentiality, IP

WP Project Management & Governance

Remote Assessment of Diseases And Relapse (RADAR) - AIMS

- * Develop and validate the science of using **biosignatures to characterise disease** and predict changes in disease state **through observational studies**
- * Understand the **regulatory and patient pathways** for using remote assessment in healthcare
- * Encourage innovation and development of **novel biosensors** and the associated **knowledge management** technology
- * Develop standards for Information Exchange that enable **seamless integration** of sensor, data capture, data management, & analysis technologies

RADAR Topic 1 CNS - Launched



- * Aim: Characterisation and Prediction of Changes in Disease State in CNS disorders via non invasive remote sensing at three levels
 - * Changes in disease state
 - * Changes in disease state due to drug
 - * Predict change in disease state
- * Focus on Multiple Sclerosis, Epilepsy and Depression
- * Apply a common set of measures {Sleep, Activity, Social Connectivity} to all diseases

Topics in development

- * Diabetes – Development to tools and mechanisms for patient self management
- * Pulmonary – Development of tools and mechanism to help predict severe exacerbation events
- * Others
 - * RADAR Platform
 - * Rheumatoid Arthritis
 - * Cardiovascular events

RADAR – Opportunities organisations outside Pharmaceuticals Industry

- * For example:
- * Software
 - * Research and application in real world setting to capture, manage, analyse and detect events in patient centric data
- * Telecommunications
 - * Developing messaging services to enable critical events to be transmitted with QOS
- * Sensor
 - * Ability to test sensors in real patient studies
- * Device
 - * Developing further roadmaps for healthcare applications